

PERMALUX



MARITIME SAFETY PRODUCTS & SYSTEMS

Your partner on land, on water, in the air

P.E.R. Flucht- und Rettungsleitsysteme GmbH

Am Hopfenbach 3
22926 Ahrensburg
Germany

T +49 4102 4667-0
www.permalux.com
maritime@permalux.com



PERMALUX – YOUR PARTNER FOR PHOTOLUMINESCENT SOLUTIONS



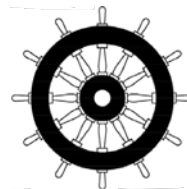
We are supporting our international customers with tailor-made products, systems and services in every area of safety guidance systems since 25 years.

These products and systems are used worldwide in the shipping and aviation area as well as in buildings. High quality, comprehensive technical knowhow and a high degree of flexibility in combination with efficient and customer-oriented processes are the hallmarks of PERMALUX.

LONGSTANDING EXPERIENCE FOR YOUR SAFETY

We have many years of experience in developing and producing products of the highest quality, which are used in sensitive fields like the maritime and aviation industries.

We fulfill the latest standards and have implemented a quality management system according to ISO 9001 and EN ISO 9100. Furthermore our company and products are MED certified as well as having a type approval certified by Lloyd's Register. This guarantees our customers the best possible safety and reliability.



GUIDELINE® – YOUR CUSTOMIZED SOLUTION

Guideline® is our photoluminescent Emergency and Rescue System which is entirely designed and produced in-house. Guideline® comprises signs and plans as well as a Low Location Lighting System (LLL) which basically consists of just three elements: guiding profiles, exchangeable inlays and end caps. This setup allows easy installation and preserves long term functionality. Used as an LLL system you can install it on the floor or on walls up to 300 mm in height.

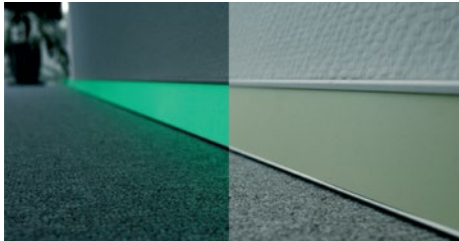
Special profiles allow a perfect match to carpet, floor tiles and other materials. All inlays are based on a PVC free substrate with a photoluminescent coating provided in standard or high quality design, suitable for all different ambient light conditions. You can select between different widths and on request, have your products imprinted with individually designed logos or pictograms.

In addition, you have the option of using appropriate accessories to protect your product even better or to adapt the system to your individual design. Starting with the design, production and subsequent services, we handle the entire product life cycle.

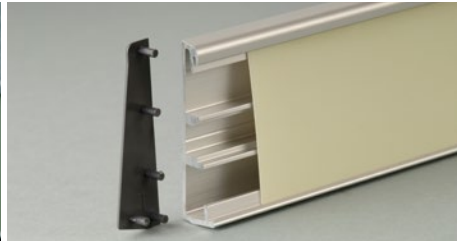
GUIDELINE® – ONE SYSTEM, VARIOUS OPTIONS

THE GUIDELINE® SYSTEM

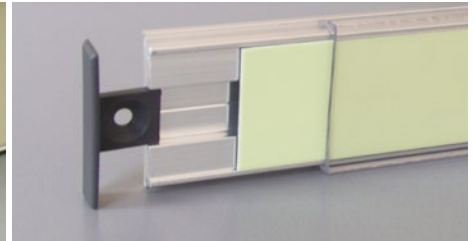
Our Guideline® system offers our customers a complete and modular emergency and rescue system for safety on board.



Photoluminescent effect



Bulkhead mounting



Floor and bulkhead mounting

COLOUR OPTIONS AND DECORATIVE SURFACES

With Guideline® we offer a high quality Low Location Lighting (LLL) safety system which can also be used as a design element, thus opening a wide range of new possibilities for our customers.

The Guideline® LLL system offers the option of different colours and decorative surfaces, such as wood print. In this way the escape and rescue system can be optimally adapted to the interior design of the ship.

Due to its high luminosity even in low ambient light and its individual design options, Guideline® is a real alternative to electrical LLL systems in crew and passenger areas. These options also enable our customers to add their own individual touch to safety on board while using a flawless and low maintenance product which does not incur any additional energy-related costs.



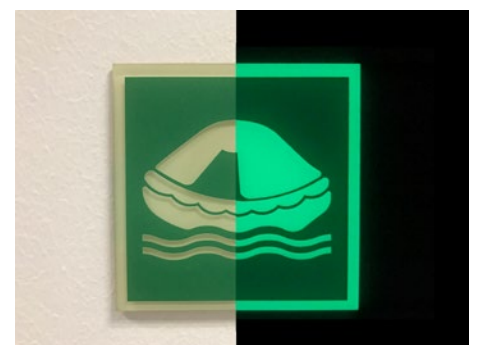
Various colour options



Wood print look

SAFETY SIGNS AND CABIN PLANS

In addition to the high quality LLL system, the entire Guideline® product range includes safety signs, cabin plans and decorative signs. Our aim is to provide our customers with tailor-made solutions for their individual applications.



Sign with photoluminescent effect

GUIDELINE® – YOUR CUSTOMIZED SOLUTION

GUIDELINE® – BETTER THAN THE STANDARD

Guideline® complies with all requirements of IMO Resolution A.752 (18) and ISO 15370.

The following table shows the standard values and our performance.

Guideline® PERAlu 1/5			
Inlay Width in 30 mm	Colour Code	Measured luminance (mcd / m ² by 25 lx) Time after removing light power	
		10 min (ISO 15370: 93,75lx)	60 min (ISO 15370: 12,5lx)
	Uni Green	97	28
Inlay Width in 50 mm	Colour Code	Measured luminance (mcd / m ² by 50 lx) Time after removing light power	
		10 min (ISO 15370: 33,75lx)	60 min (ISO 15370: 4,5lx)
	Uni Green	97	28
	Uni Silver-Grey	66	19
	Uni Brown-Green	62	18
	Uni Beige-Sand	51	16
	Uni Brown-Beige	38	11
	Uni Brown	44	13
	Wood Green	48	15
	Wood Silver-Grey	35	10
	Wood Brown-Green	38	11
Inlay Width in 50 mm	Colour Code	Measured luminance (mcd / m ² by 50 lx) Time after removing light power	
		10 min (ISO 15370: 33,75lx)	60 min (ISO 15370: 4,5lx)
	Wood Beige-Sand	47	14
	Wood Brown-Beige	36	10
	Wood Brown	38	11

Please note in order to choose the right width or quality of an LLL system it is essential to determine the ambient light at the point of use.

Guideline® offers the following advantages:

- Various colours available
- Highest light performance
Fulfills the standard already by 10 lux (50 mm Uni Green)
- Only certified 30 mm LLL system in the market
- Development, design, production and quality control under one roof
- 100% made in Germany
- PVC free
- More than 25 years experience
- Customized solutions available

Considerable advantages over electrical system:

- Flawless
- Only maintenance required is the prescribed interval check of the light performance
- Reliable and robust system – minimal storage necessary for spare parts